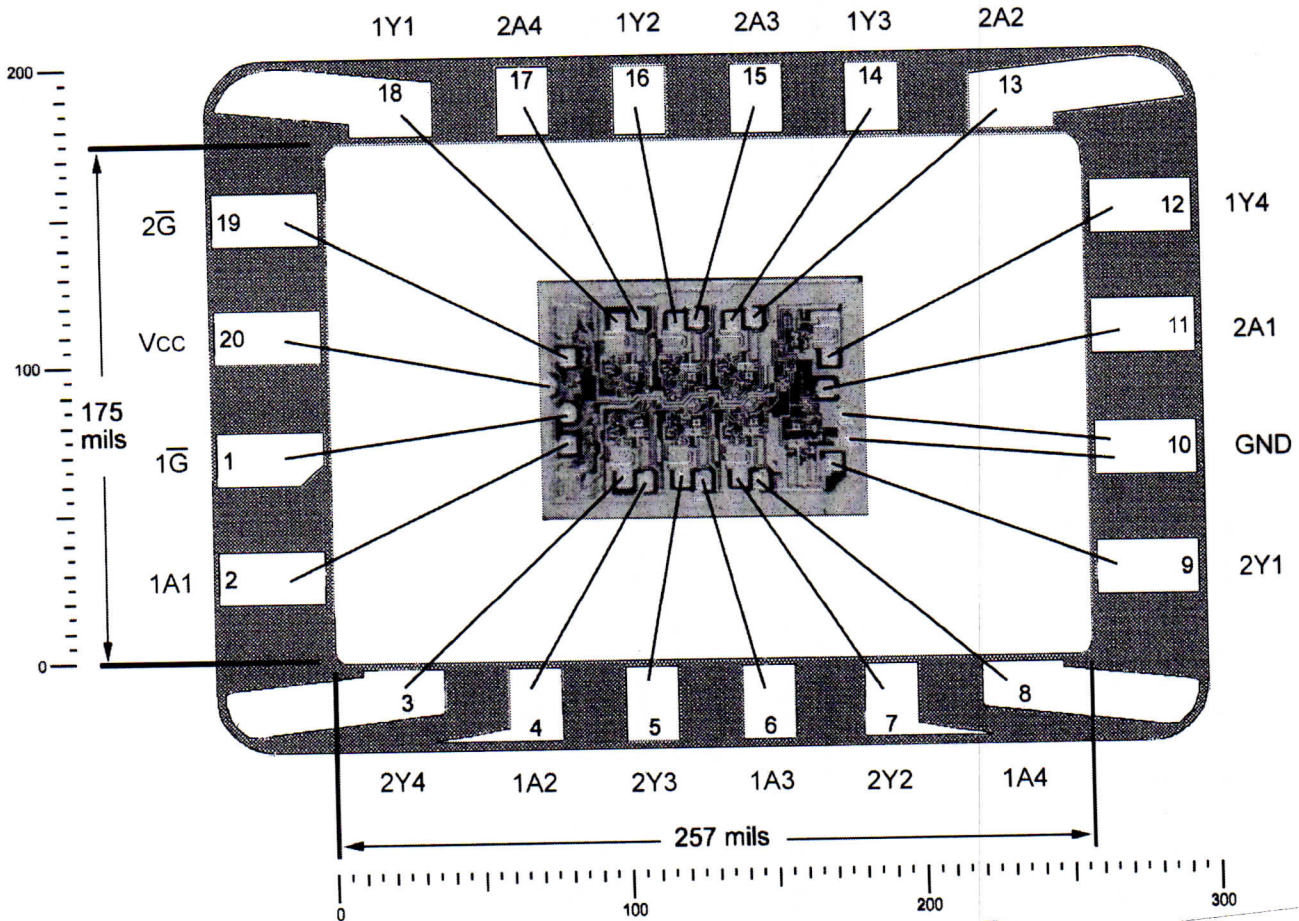




# Sierra Components, Inc.

2222 Park Place • Suite 3E • Minden, Nevada 89423  
 Phone: 775.783.4940 Fax: 775.783.4947

Chip back potential is the level which bulk silicon is maintained by on-chip connection, or it is the level to which the chip back must be connected when specifically stated below. If no potential is given the chip back should be isolated.



**Top Material: Aluminum**  
**Backside Material: Silicon**  
**Bond Pad Size: .004" X .004" min.**  
**Backside Potential:**  
**Mask Ref: MTLF 930 Rev.A**

**APPROVED BY: DK**

**DIE SIZE .079 x .107"**

**DATE: 6/20/16**

**MFG: Texas Inst.**

**TICKNESS .015"**

**P/N: 54S240**